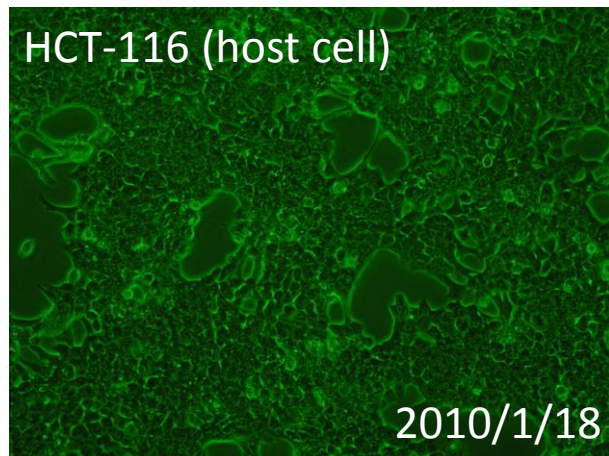
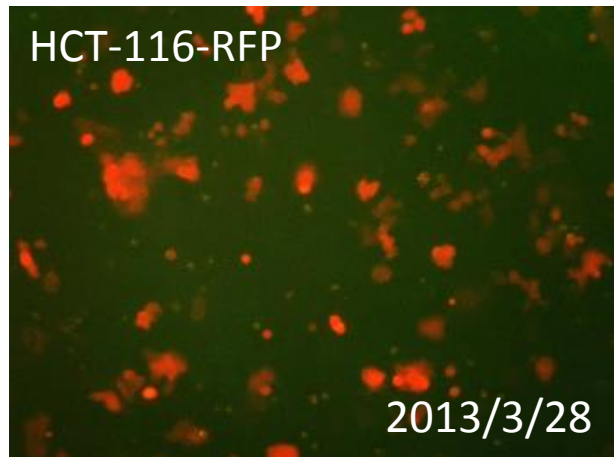
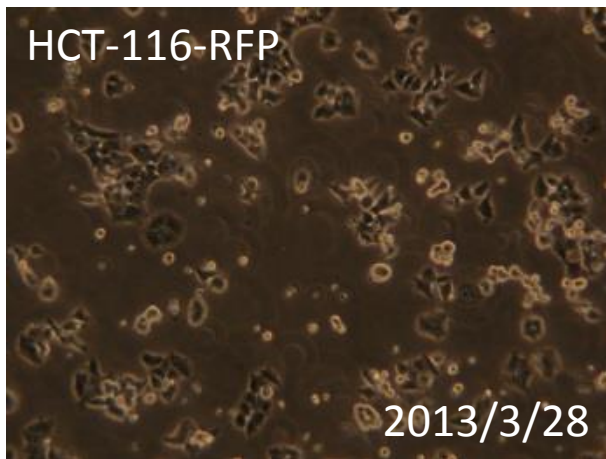


091-026 HCT-116-RFP

要旨

HCT-116-RFP細胞は、ヒト大腸がん由来HCT-116細胞に対して、赤色蛍光タンパク質 (DsRed2) 遺伝子を含むレトロウイルスベクターpLNCX2による遺伝子組換えを行って作製した細胞である。顕微鏡観察から、蛍光を発する細胞の割合は、83%であった。Short tandem repeats (STR)-PCR法による解析では、ATCC、JCRB等のHCT-116と同一と認証された。

Microscopic images



STR-profile

KBN0111

Summary (Cell No. : KBN0111_07)

It was confirmed that the cell (Cell No. : KBN0111_07 Cell Name: cell-021) was the same as the cell registered in JCRB (JCRB1408 HCT-116 clone#2-Luc), the cell registered in DSMZ (ACC581 HCT-116), and the cell registered in ATCC (CCL-247 HCT 116), by the comparison with the database of JCRB Cell Bank.

Furthermore, it was confirmed that this cell was the same as that also of KBN0110_02 (Cell Name: cell-006).

It is known that there is mutation in HCT-116 at mismatch repair enzyme (MSI-H).

(http://cancer.sanger.ac.uk/cell_lines/sample/overview?id=905936)

Therefore, the microsatellite instability was induced and it is thought that the result that EV was low.

STR-profile

KBN0111

Peak report (Cell No. : KBN0111_07)



STR Profile (Cell No. : KBN0111_07)

D3S1358	TH01	D21S11	D18S51	Penta_E	D5S818	D13S317	D7S820
12,17,18,19	8,9	29,30	17,18	13,14	9,10,11	10,12	11,12
D16S539	CSF1PO	Penta_D	AM	VWA	D8S1179	TPOX	FGA
11,12,13,14	7,10	9,13	X	17,18,21,22	12,14,15	8	18,23,24

Comparison with database (Cell No. : KBN0111_07)

Cell No.	Cell Name	Lot No.	EV	D5S818	D13S317	D7S820	D16S539	VWA	TH01	AM	TPOX	CSF1PO
KBN0111-07	cell-021	03252013	1.000	9,10,11	10,12	11,12	11,12,13,14	17,18,21,22	8,9	X	B	7,10
JCRB1408	HCT-116 clone#2-Luc	05172011	0.900	10,11	10,12	11,12	11,13,14	17,18,22,23	8,9	X	B	7,10
KBN0110-02	cell-006	03212013	0.865	10,11	10,12	11	11,12,13	17,22	8,9	X	B	7,10
ACG581	HCT-116	-----	0.833	10,11	10,12	11,12	11,13	17	8,9	X	B	7,10
OCL-247	HCT 116	atcc.web	0.821	10,11	10,12	11,12	11,13	17,22	8,9	X,Y	8,9	7,10
JCRB0816	SBC-1	041786	0.629	9,11	12	11,12	9	14,17	8,9	X	B	10,12
JCRB0817	SBC-2	070896	0.629	9,11	12	11,12	9	14,17	8,9	X	B	10,12
JCRB0032	OCRF-SB	090889	0.611	11,12	10,12	11,12	13	18	9,10	X,Y	B	10,12
JCRB0256	RCM-1	110698	0.611	11,12	10,12	11,12	11,12	20	9	X	B,11	10,12
JCRB1014	KMRM-MI	07102002	0.595	10,11	12,13	11,12	12	17,18	6,9	X,Y	B,11	12
IFC0418	ASF-4-1	847	0.578	9,10	11,12	10,11	10,11	17,18	8,9	X,Y	11	10,13
KBN0111-07	cell-021	03252013	1.000	9,10,11	10,12	11,12	11,12,13,14	17,18,21,22	8,9	X	B	7,10