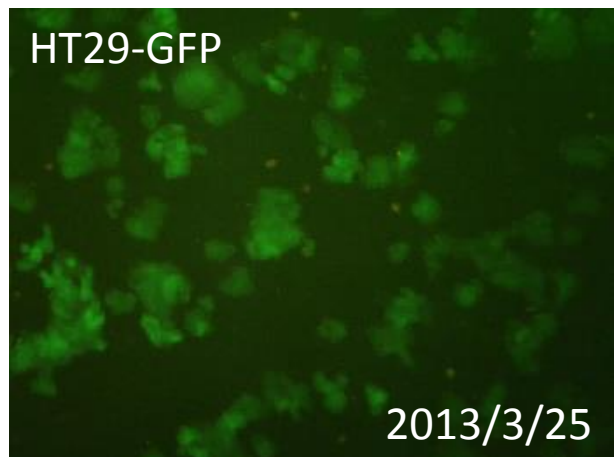
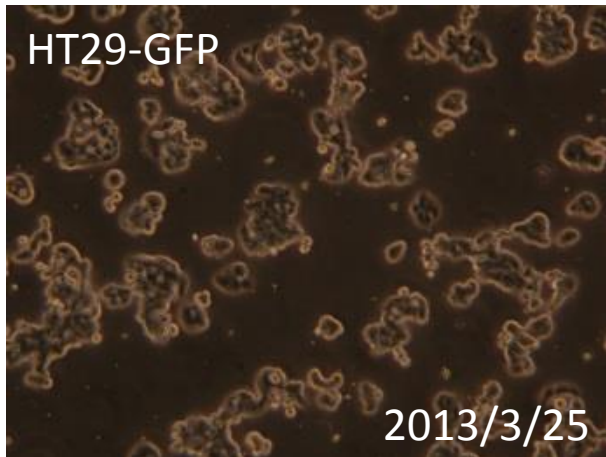


091-030 HT29-GFP

要旨

HT29-GFP細胞は、ヒト大腸がん由来HT29細胞に対して、緑色蛍光タンパク質(EGFP)遺伝子を含むレトロウイルスベクターpFBIによる遺伝子組換えを行って作製した細胞である。顕微鏡観察から、蛍光を発する細胞の割合は、96%であった。Short tandem repeats (STR)-PCR法による解析では、ATCC等のHT29と同一と認証された。

Microscopic images



STR-profile

KBN0110

Summary (Cell No. : KBN0110_01)

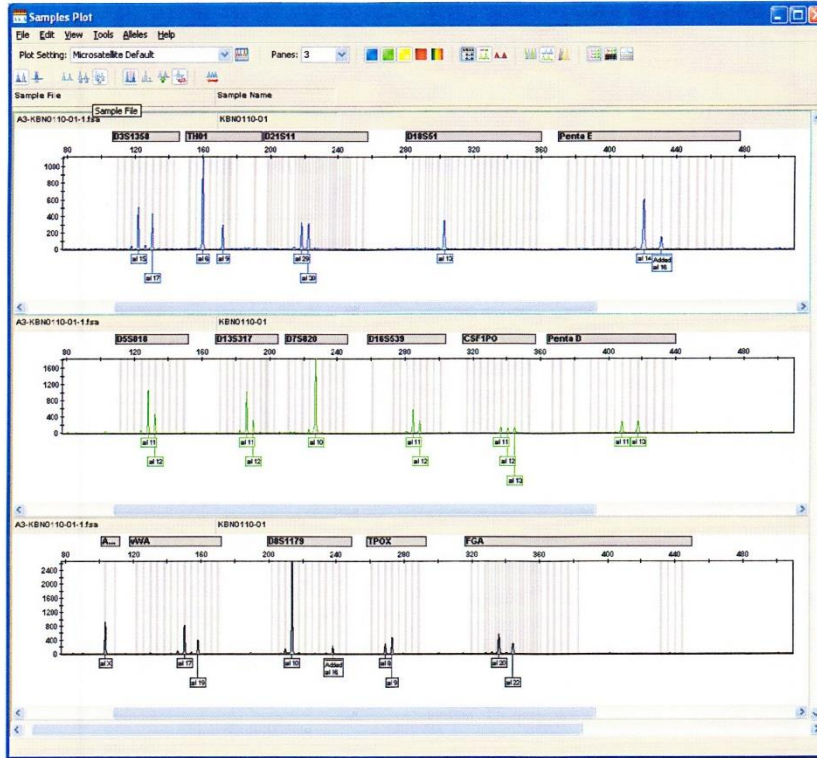
It was confirmed that the cell (Cell No. : KBN0110_01, Cell Name: cell-005) was the same as the cell registered in ATCC (HTB-38 HT-29), the cell registered in JCRB (JCRB0224 WiDr, JCRB1383 HT-29-Luc), and the cell registered in DSMZ (ACC299 HT-29, ACC129 CX-1), by the comparison with the database of JCRB Cell Bank.

Furthermore, it was confirmed that this cell was the same as that also of KBN0107_03 (Cell Name: Cell_003).

STR-profile

KBN0110

Peak report (Cell No. : KBN0110_01)



STR Profile (Cell No. : KBN0110_01)

D3S1358	TH01	D21S11	D18S51	Penta E	D5S818	D13S317	D7S820
15,17	6,9	29,30	13	14,16	11,12	11,12	10
D16S539	CSF1PO	Penta D	AM	VWA	D8S1179	TPOX	FGA
11,12	11,12,13	11,13	X	17,19	10,16	8,9	20,22

Comparison with database (Cell No. : KBN0110_01)

Cell No.	Cell Name	Lot No.	EV	D5S818	D13S317	D7S820	D16S539	VWA	TH01	AM	TPOX	CSF1PO
KBN0110-01	cell-005	03212013	1.000	11,12	11,12	10	11,12	17,19	6,9	X	8,9	11,12,13
HTB-38	HT-29	fromATCC	0.970	11,12	11,12	10	11,12	17,19	6,9	X	8,9	11,12
JCRB0224	WIDr	051598	0.970	11,12	11,12	10	11,12	17,19	6,9	X	8,9	11,12
JCRB1383	HT-29-Luc	11192010	0.970	11,12	11,12	10	11,12	17,19	6,9	X	8,9	11,12
ACC 299	HT-29	DSMZ_web	0.970	11,12	11,12	10	11,12	17,19	6,9	X	8,9	11,12
ACC 129	CX-1	DSMZ_web	0.938	11,12	11	10	11,12	17,19	6,9	X	8,9	11,12
KBN0107-03	Cell_003	03132013	0.938	11,12	11	10	11,12	17,19	6,9	X	8,9	11,12
JCRB0106	SOCH-26	032787	0.750	11,12	11,12	10	11,12	16	6,7	X	8,11	11,12
JCRB0532	TIG-107	05222012	0.727	11,12	11,12	8,10	13	14,18	6,9	X	8,9	11,12
JCRB1142	HEC-265	02072006	0.688	10,12	11,12	10,11	11	19,22	9	X	9,11	11,12
ACC 264	COLO-679	DSMZ_web	0.667	11,12	11,12	9,10	12,13	15	7,9	X	9,12	11,12
KBN0110-01	cell-005	03212013	1.000	11,12	11,12	10	11,12	17,19	6,9	X	8,9	11,12,13