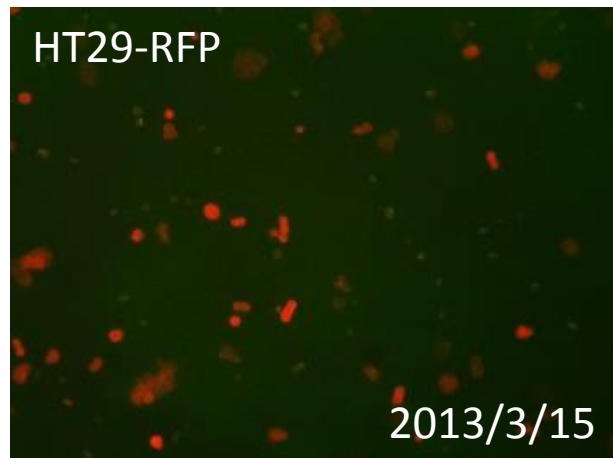
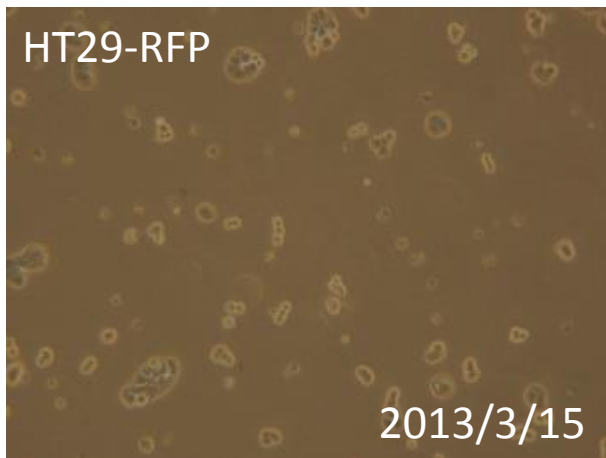


## 091-031 HT29-RFP

### 要旨

HT29-RFP細胞は、ヒト大腸がん由来HT29細胞に対して、赤色蛍光タンパク質(DsRed2)遺伝子を含むレトロウイルスベクターpLNCX2による遺伝子組換えを行って作製した細胞である。顕微鏡観察から、蛍光を発する細胞の割合は、98%であった。Short tandem repeats (STR)-PCR法による解析では、ATCCのHT-29等と同一と認証された。

### Microscopic images



### STR-profile

KBN0107

Summary (Cell No. : KBN0107\_03)

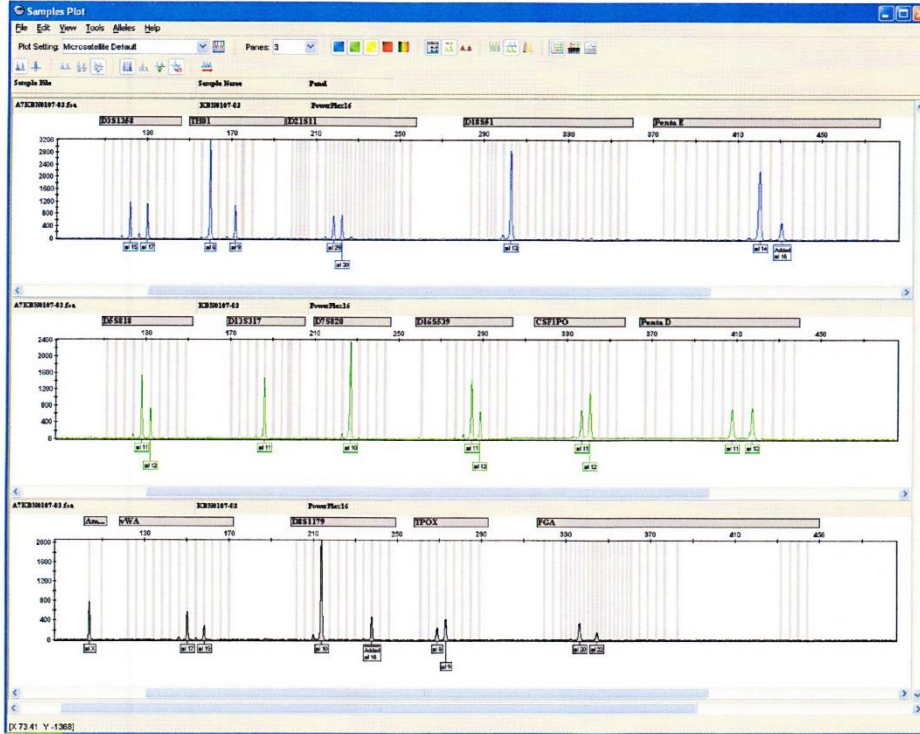
It was confirmed that the cell (Cell No. : KBN0107\_03, Cell Name: Cell\_003) was the same as the cell registered in JCRB (JCRB0224 WiDr), the cell registered in DSMZ (ACC129 CX-1, ACC299 HT-29), and the cell registered in ATCC (HTB-38 HT-29, CCL-218 WiDr), by the comparison with the database of JCRB Cell Bank.

Furthermore, it was confirmed that this cell was the same as that also of KBN0110\_01 (Cell Name: Cell-005).

STR-profile

KBN0107

Peak report (Cell No. : KBN0107\_03)



STR Profile (Cell No. : KBN0107\_03)

D3S1358	TH01	D21S11	D18S51	Penta E	D5S818	D13S317	D7S820
15,17	6,9	29,30	13	14,16	11,12	11	10
D18S539	CSF1PO	Penta D	AM	VWA	D8S1179	TPOX	FGA
11,12	11,12	11,13	X	17,19	10,16	8,9	20,22

Comparison with database (Cell No. : KBN0107\_03)

Cell No.	Cell Name	Lot No.	FV	D5S818	D13S317	D7S820	D16S539	VWA	TH01	AM	TPOX	CSF1PO
KBN0107-03	Cell_003	03132013	1.000	11,12	11	10	11,12	17,19	6,9	X	8,9	11,12
JCRB0224	WDR	06302010	1.000	11,12	11	10	11,12	17,19	6,9	X	8,9	11,12
ACC129	OX-1	dszm_wb	1.000	11,12	11	10	11,12	17,19	6,9	X	8,9	11,12
HTB-38	HT-29	fromATCC	0.968	11,12	11,12	10	11,12	17,19	6,9	X	8,9	11,12
COL-218	WDR	fromATCC	0.968	11,12	11,12	10	11,12	17,19	6,9	X	8,9	11,12
ACC299	HT-29	dszm_wb	0.968	11,12	11,12	10	11,12	17,19	6,9	X	8,9	11,12
KBN0110-01	Cell_005	03212013	0.938	11,12	11,12	10	11,12	17,19	6,9	X	8,9	11,12,13
JCRB0106	SOCH-26	032787	0.733	11,12	11,12	10	11,12	16	6,7	X	8,11	11,12
JCRB0532	TIG-107	06222012	0.710	11,12	11,12	8,10	13	14,16	6,9	X	8,9	11,12
JCRB1371	GS-3A4-He pG2	06282010	0.690	11,12	9,13	10	12	17	9	XY	8,9	10,11
IF050108	MG-63	240	0.667	11,12	11	10	11,12	16,19	9,3	XY	8,11	10,12
KBN0107-03	Cell_003	03132013	1.000	11,12	11	10	11,12	17,19	6,9	X	8,9	11,12