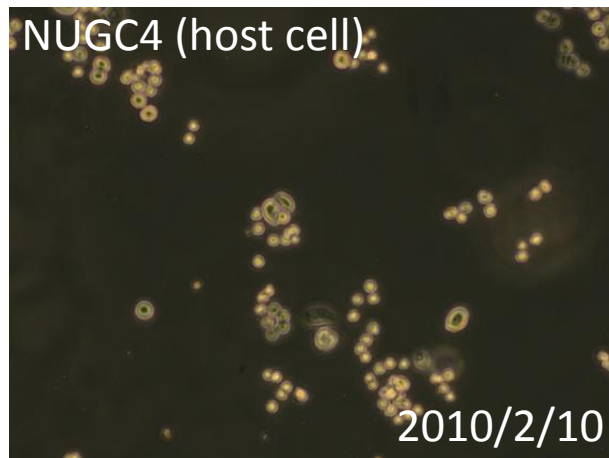
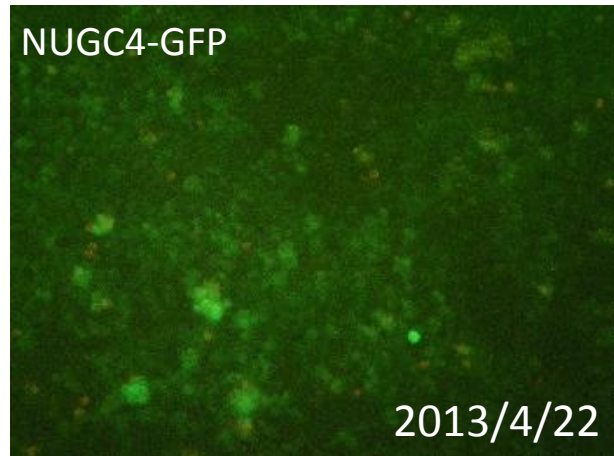
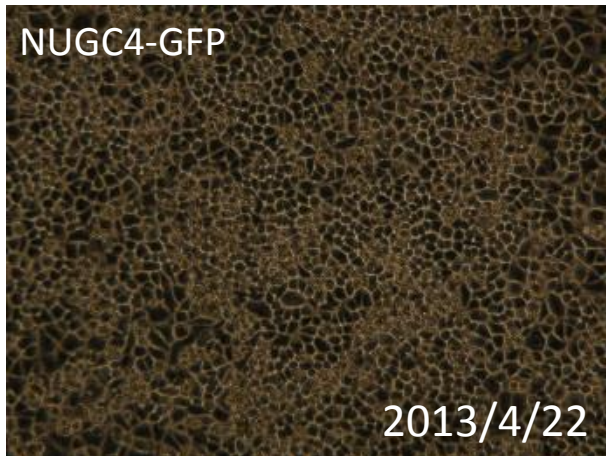


## 091-039 NUGC4-GFP

### 要旨

NUGC4-GFP細胞は、ヒト胃がん由来NUGC4細胞に対して、緑色蛍光タンパク質(EGFP)遺伝子を含むレトロウイルスベクターpFBによる遺伝子組換えを行って作製した細胞である。顕微鏡観察から、蛍光を発する細胞の割合は、98%であった。Short tandem repeats (STR)-PCR法による解析では、JCRBのNUGC-4等と同一と認証された。

### Microscopic images



### STR-profile

KBN0116

Summary (Cell No. : KBN0116\_01)

It was confirmed that the cell (Cell No. : KBN0116\_01, Cell Name: cell-045) was the same as the cell registered in JCRB (JCRB0834 NUGC-4), and the cell registered in RCB (RCB1939 NUGC-4), by the comparison with the database of JCRB Cell Bank. Furthermore, it was confirmed that this cell was the same as that also of KBN0112\_02 (Cell Name: cell-026).

STR-profile

KBN0116

Peak report (Cell No. : KBN0116\_01)



STR Profile (Cell No. : KBN0116\_01)

D3S1358	TH01	D21S11	D18S51	Penta E	D5S818	D13S317	D7S820
15,16	7,9	30,3,31	16,19	13,15	11,12	11,13	11
D16S539	CSF1PO	Penta D	AM	VWA	D8S1179	TPOX	FGA
9	10,11	9,12	X	14,18	12,13	8,9	23,26

Comparison with database (Cell No : KBN0116\_01)

Cell No.	Cell Name	Lot No.	FV	D5S818	D13S317	D7S820	D16S539	VWA	TH01	AM	TPOX	CSF1PO
KBN0116-01	cell-045	04302013	1.000	11,12	11,13	11	9	14,18	7,9	X	8,9	10,11
JCRB0834	NUGC-4	031097	1.000	11,12	11,13	11	9	14,18	7,9	X	8,9	10,11
RCB1939	NUGC-4	-----	1.000	11,12	11,13	11	9	14,18	7,9	X	8,9	10,11
KBN0112-02	cell-026	04012013	1.000	11,12	11,13	11	9	14,18	7,9	X	8,9	10,11
JCRB0325	XPEMB-1	03312011	0.839	11,12	11,13	11,14	11,12	18	7,9	X	8,9	10,11
IFC50276	A2055	1071	0.774	9,12	13,14	11	9,13	14,18	7,9	XY	8	10,11
JCRB1030	JHH-6	09082009	0.774	10,11	11,12,13	11	10	14,18	7,9	X	8,9	10,12
JCRB1114	Yus822	8092005	0.733	11,13	11,13	11	9,12	14,18	6,9,3	X	8	10,11
JCRB0328	RBL162T	5242010	0.714	10	8,11	11	9	14	7,9	X	9,11	10,11
JCRB1419	KYSE0790	7252011	0.714	11	13	10,11	9,10	16,18	9	X	8	10,11
IFC50482	CCD 641 CoN	832	0.710	12,13	11,13	11	10,11	14,18	7,8	X	9,10	10,11
KBN0116-01	cell-045	04302013	1.000	11,12	11,13	11	9	14,18	7,9	X	8,9	10,11