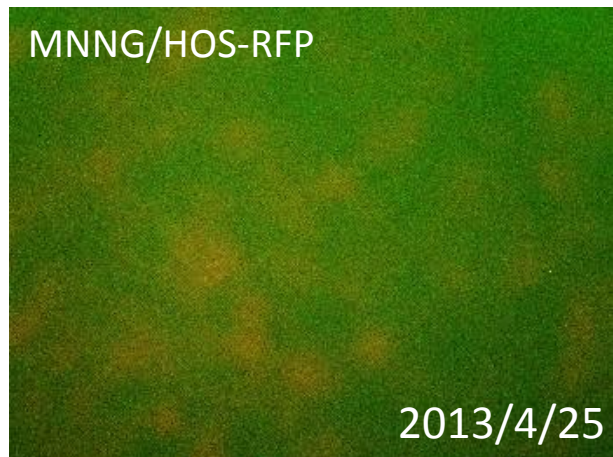
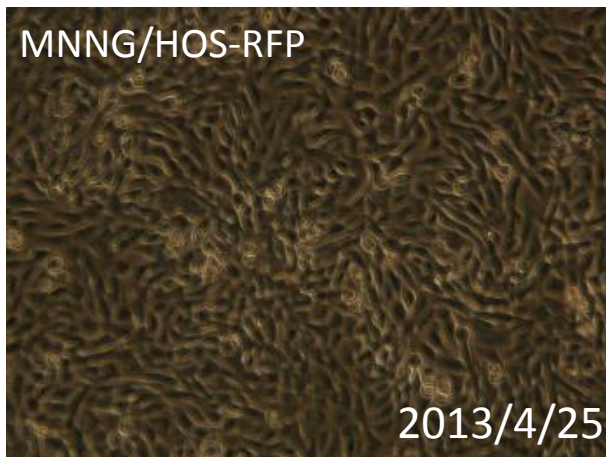


091-063 MNNG/HOS-RFP

要旨

MNNG/HOS-RFP細胞は、ヒト骨肉腫由来MNNG/HOS細胞に対して、赤色蛍光タンパク質 (DsRed2) 遺伝子を含むレトロウイルスベクターpLNCX2による遺伝子組換えを行って作製した細胞である。顕微鏡観察から、蛍光を発する細胞の割合は、49%であった。Short tandem repeats (STR)-PCR法による解析では、ATCCのHOS等と同一と認証された。

Microscopic images



STR-profile

KBN0116

Summary (Cell No. : KBN0116_06)

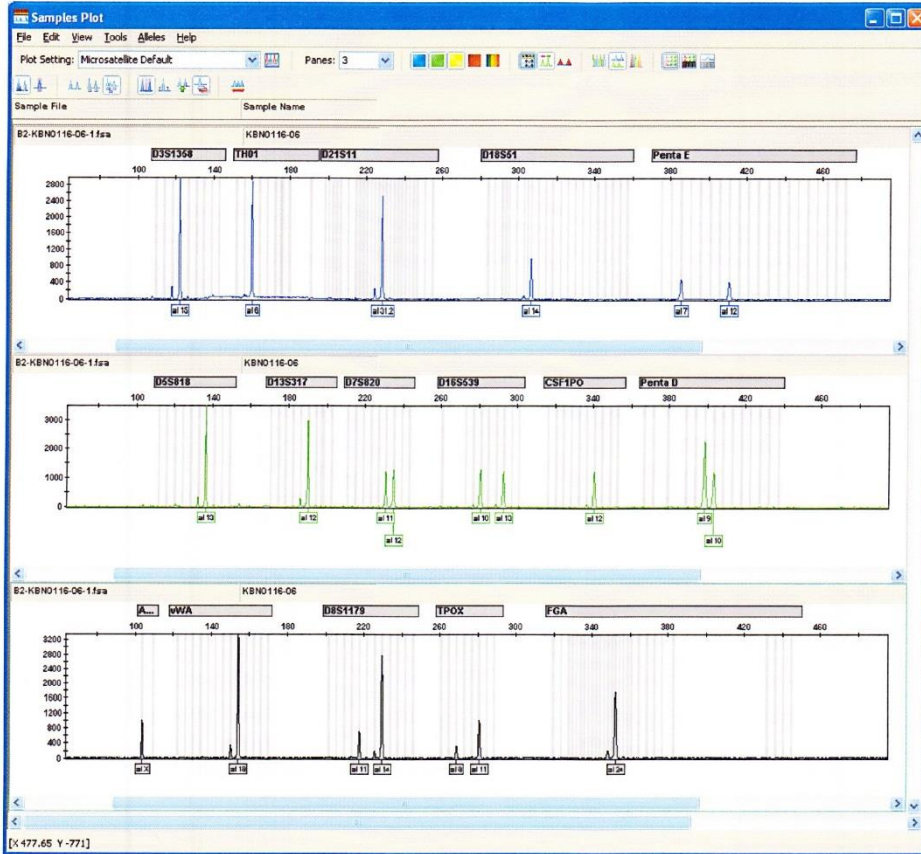
It was confirmed that the cell (Cell No.: KBN0116_06, Cell Name: cell-050) was the same as the cell registered in ATCC (CRL-1543 HOS, CRL-1544 KHOS/NP (R-970-5), CRL-1546 KHOS-321H, CRL-1547 MNNG/HOS CI #5 [R-1059-D]), the cell registered in RCB (RCB0992 HOS), and the cell registered in JCRB (IFO50106 HOS), by the comparison with the database of JCRB Cell Bank.

Furthermore, it was confirmed that this cell was the same as that also of KBN0110_09 (Cell Name: cell-013), KBN0112_05 (Cell Name: cell-029), KBN0116_02 (Cell Name: cell-046), and KBN0114_09 (Cell Name: cell-043).

STR-profile

KBN0116

Peak report (Cell No. : KBN0116_06)



STR Profile (Cell No. : KBN0116_06)

D3S1358	TH01	D21S11	D18S51	Penta E	D5S818	D13S317	D7S820
15	6	31,2	14	7,12	19	12	11,12
D16S539	CSF1PO	Penta D	AM	VWA	D8S1179	TPOX	FGA
10,13	12	9,10	X	18	11,14	8,11	24

Comparison with database (Cell No : KBN0116_06)

Cell No.	Cell Name	Lot No.	FV	D5S818	D13S317	D7S820	D16S539	VWA	TH01	AM	TPOX	CSF1PO
KBN0116-06	cell-050	04302013	1.000	13	12	11,12	10,13	18	6	X	8,11	12
CRL-1543	HOS	-----	1.000	13	12	11,12	10,13	18	6	X	8,11	12
ROB0992	HOS	-----	1.000	13	12	11,12	10,13	18	6	X	8,11	12
IFOS0108	HOS	239	1.000	13	12	11,12	10,13	18	6	X	8,11	12
CRL-1544	KHOS/NP (R-970-S)	-----	1.000	13	12	11,12	10,13	18	6	X	8,11	12
CRL-1546	KHOS-321H	-----	1.000	13	12	11,12	10,13	18	6	X	8,11	12
CRL-1547	MNNG/HOS Cl #5 [R-1059-D]	-----	1.000	13	12	11,12	10,13	18	6	X	8,11	12
KBN0110-09	cell-013	03212013	1.000	13	12	11,12	10,13	18	6	X	8,11	12
KBN0112-05	cell-029	04012013	0.957	13	12	11,12	10,13	18	6	X	11	12
KBN0116-02	cell-048	04302013	0.957	13	12	11,12	10,13	18	6	X	11	12
KBN0114-09	cell-043	04122013	0.917	13	12,13	11,12	10,13	18	6	X	11	12
KBN0116-08	cell-050	04302013	1.000	13	12	11,12	10,13	18	6	X	8,11	12