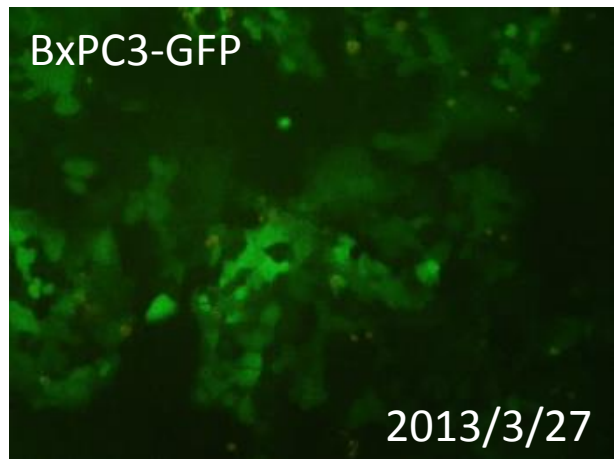
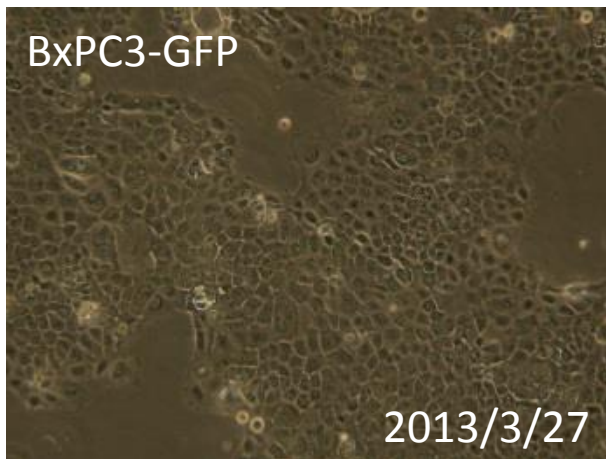


091-069 BxPC3-GFP

要旨

BxPC3-GFP細胞は、ヒト膵臓がん由来BxPC3細胞に対して、緑色蛍光タンパク質(EGFP)遺伝子を含むレトロウイルスベクターpFBによる遺伝子組換えを行って作製した細胞である。顕微鏡観察から、蛍光を発する細胞の割合は、96%であった。Short tandem repeats (STR)-PCR法による解析では、ATCC、JCRBのBxPC-3と同一と認証された。

Microscopic images



STR-profile

KBN0111

Summary (Cell No. : KBN0111_03)

It was confirmed that the cell (Cell No. : KBN0111_03, Cell Name: cell-017) was the same as the cell registered in ATCC (CRL-1687 BxPC-3), and the cell registered in JCRB (JCRB1448 BxPC-3-Luc#2), by the comparison with the database of JCRB Cell Bank.

Furthermore, it was confirmed that this cell was the same as that also of KBN0107_02 (Cell Name: Cell_002).

STR-profile

KBN0111

Peak report (Cell No. : KBN0111_03)



STR Profile (Cell No. : KBN0111_03)

| D3S1358 | TH01 | D21S11 | D18S51 | Penta_E | D5S818 | D13S317 | D7S820 |
|---------|--------|---------|--------|---------|---------|---------|--------|
| 14,16 | 9 | 29 | 12 | 12,14 | 11 | 11 | 10,13 |
| D16S539 | CSF1PO | Penta_D | AM | VWA | D8S1179 | TPOX | FGA |
| 9,11 | 13,14 | 14 | X | 14,18 | 13 | 8 | 20,21 |

Comparison with database (Cell No. : KBN0111_03)

| Cell No. | Cell Name | Lot No. | EV | D5S818 | D13S317 | D7S820 | D16S539 | VWA | TH01 | AM | TPOX | CSF1PO |
|------------|--------------|----------|-------|--------|---------|--------|---------|-------|-------|-----|------|--------|
| KBN0111-03 | cell-017 | 03252013 | 1.000 | 11 | 11 | 10,13 | 9,11 | 14,18 | 9 | X | 8 | 13,14 |
| CRL-1687 | BxPC-3 | ----- | 0.960 | 11 | 11 | 10,13 | 9,11 | 14,18 | 9 | X | 8 | 13 |
| JCRB1448 | BxPC-3-Luc#2 | 01122012 | 0.960 | 11 | 11 | 10,13 | 9,11 | 14,18 | 9 | X | 8 | 13 |
| KBN0107-02 | Cell_002 | 03132013 | 0.960 | 11 | 11 | 10,13 | 9,11 | 14,18 | 9 | X | 8 | 13 |
| JCRB1011 | KMRC-2 | 08262002 | 0.714 | 11,14 | 12 | 10,11 | 9,11 | 14,18 | 7,9 | X | 8 | 11,13 |
| HTB-126 | Hs 578T | atcc_web | 0.667 | 11 | 11 | 10 | 9,12 | 17 | 9,9,3 | X | 8 | 13 |
| JCRB1375 | Hs578T-Luc | 09222010 | 0.667 | 11 | 11 | 10 | 9,12 | 17 | 9,9,3 | X | 8 | 13 |
| JCRB1009 | RERF-GC-1B | 05222002 | 0.615 | 10,12 | 12 | 10,13 | 11 | 14,18 | 9 | X | 11 | 12,13 |
| JCRB0332 | AT(L)6KY | 07052006 | 0.600 | 9,11 | 11,12 | 10,11 | 11 | 14,18 | 7,9 | X,Y | 8,9 | 11,12 |
| JCRB0319 | FPC15JT0 | 082086 | 0.593 | 10,11 | 11 | 10,11 | 9,11 | 15,18 | 7 | X | 6,11 | 10 |
| JCRB0831 | HO-1-N-1 | 110797 | 0.593 | 9 | 10,11 | 10,13 | 9,11 | 16,18 | 9 | X,Y | 11 | 12 |
| KBN0111-03 | cell-017 | 03252013 | 1.000 | 11 | 11 | 10,13 | 9,11 | 14,18 | 9 | X | 8 | 13,14 |