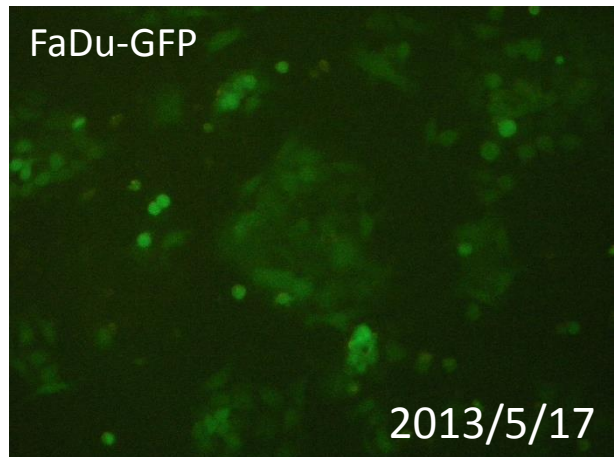
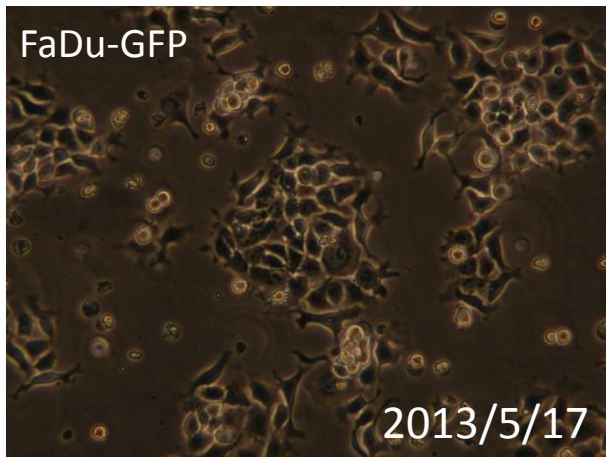


091-075 FaDu-GFP

要旨

FaDu-GFP細胞は、ヒト咽頭がん由来FaDu細胞に対して、緑色蛍光タンパク質(EGFP)遺伝子を含むレトロウイルスベクターpFB1による遺伝子組換えを行って作製した細胞である。顕微鏡観察から、蛍光を発する細胞の割合は、100%であった。Short tandem repeats (STR)-PCR法による解析では、ATCCのFaDuと同一と認証された。

Microscopic images



STR-profile

Summary (Cell No. : KBN0119_01)

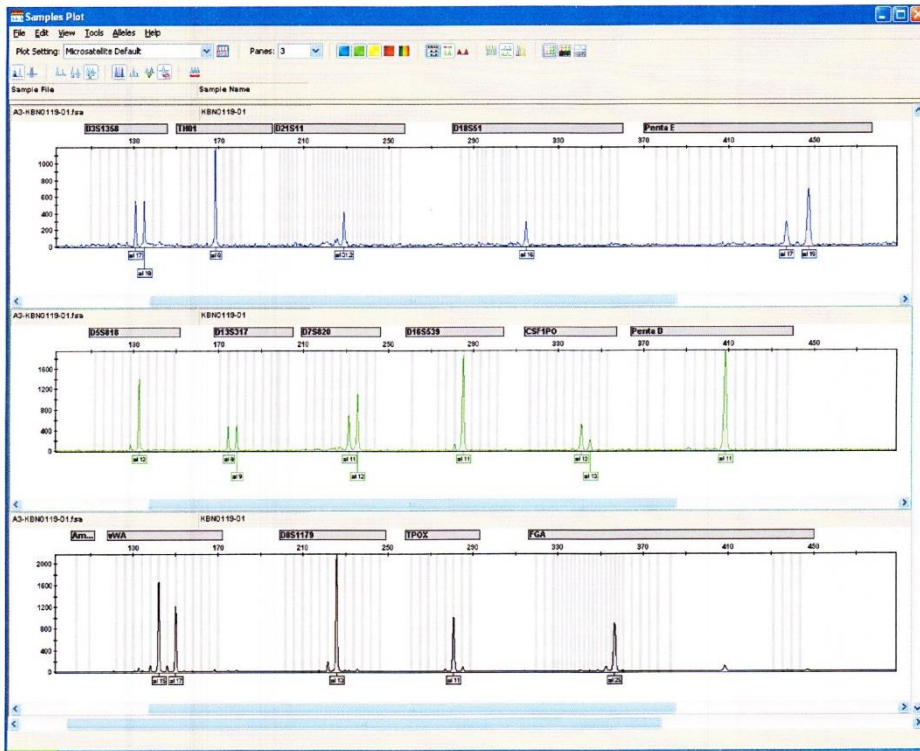
It was confirmed that the cell (Cell No. : KBN0119_01, Cell Name: cell-065) was the same as the cell registered in ATCC (HTB-43 FaDu), by the comparison with the database of JCRB Cell Bank.

Furthermore, it was confirmed that this cell was the same as that also of KBN0114_06 (Cell Name: cell-040) and KBN0116_03 (Cell Name: cell-047).

STR-profile

KBN0119

Peak report (Cell No. : KBN0119_01)



STR Profile (Cell No. : KBN0119_01)

D3S1358	TH01	D21S11	D18S51	Penta E	D5S818	D13S317	D7S820
17,18	8	31,2	16	17,19	12	8,9	11,12
D16S539	CSF1PO	Penta D	AM	VWA	D8S1179	TPOX	FGA
11	12,13	11	-	15,17	13	11	25

Comparison with database (Cell No. : KBN0119_01)

Cell No.	Cell Name	Lot No.	FV	D5S818	D13S317	D7S820	D16S539	VWA	TH01	AM	TPOX	CSF1PO
KBN0119-01	cell-065	05152013	1.000	12	8,9	11,12	11	15,17	8	-	11	12,13
KBN0114-06	cell-040	04122013	0.960	12	8,9	11,12	11	15,17	8	-	11	12
KBN0116-03	cell-047	04302013	0.960	12	8,9	11,12	11	15,17	8	-	11	12
HTB-43	FaDu	-----	0.923	12	8,9	11,12	11	15,17,18	8	-	11	12
JCRB1492	NCI-H2228-Luc	10042012	0.640	12	11	11	11,13	15,17	7,8	X	11	12
JCRB0092	F09/TSU	031395	0.621	11,12	8,11	11,12	11	15,16	7,8	X	8,11	13,14
JFOS0022	HL-60	1065	0.615	12	8,11	11,12	11	16	8	X	8,11	13,14
JCRB0006	HL60RG	052092	0.615	12	8,11	11,12	11	16	8	X	8,11	13,14
JCRB0085	HL60	06072002	0.593	12	8,11	11,12	11	16	7,8	X	8,11	13,14
JCRB0163	HL60(S)	04182001	0.593	12	8,11	11,12	11	16	7,8	X	8,11	13,14
JFOS0289	Becker	599	0.571	12	9	11	10,14	16,17	8,9	X,Y	8,11	12,13
KBN0119-01	cell-065	05152013	1.000	12	8,9	11,12	11	15,17	8	-	11	12,13