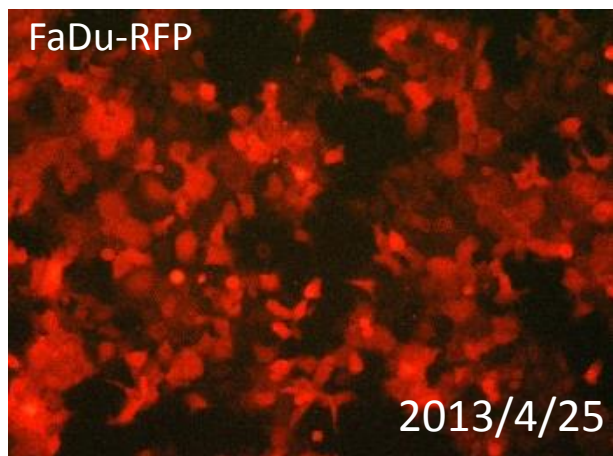
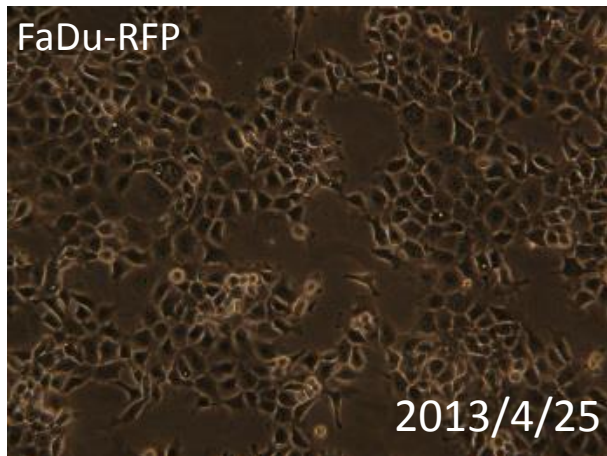


091-076 FaDu-RFP

要旨

FaDu-RFP細胞は、ヒト咽頭がん由来FaDu細胞に対して、赤色蛍光タンパク質(DsRed2)遺伝子を含むレトロウイルスベクターpLNCX2による遺伝子組換えを行って作製した細胞である。顕微鏡観察から、蛍光を発する細胞の割合は、100%であった。Short tandem repeats (STR)-PCR法による解析では、ATCCのFaDuと同一と認証された。

Microscopic images



STR-profile

KBN0116

Summary (Cell No. : KBN0116_03)

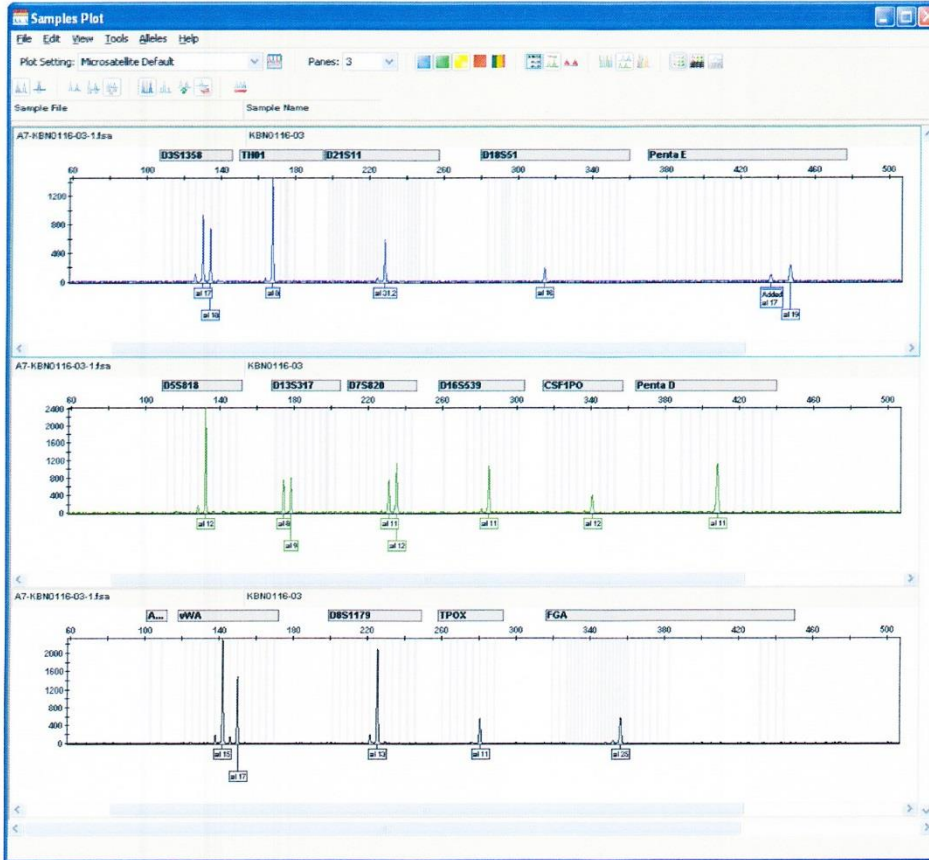
It was confirmed that the cell (Cell No. : KBN0116_03, Cell Name: cell-047) was the same as the cell registered in ATCC (HTB-43 FaDu), by the comparison with the database of JCRB Cell Bank.

Furthermore, it was confirmed that this cell was the same as that also of KBN0114_06 (Cell Name: cell-040).

STR-profile

KBN0116

Peak report (Cell No. : KBN0116_03)



STR Profile (Cell No. : KBN0116_03)

D3S1358	TH01	D21S11	D18S51	Penta E	D5S818	D13S317	D7S820
17,18	8	31,2	16	17,19	12	8,9	11,12
D16S539	CSF1PO	Penta D	AM	VWA	D8S1179	TPOX	FGA
11	12	11	-	15,17	13	11	25

Comparison with database (Cell No : KBN0116_03)

Cell No.	Cell Name	Lot No.	EV	D5S818	D13S317	D7S820	D16S539	VWA	TH01	AM	TPOX	CSF1PO
KBN0116-03	cell-047	04302013	1.000	12	8,9	11,12	11	15,17	8	-	11	12
KBN0114-08	cell-040	04122013	1.000	12	8,9	11,12	11	15,17	8	-	11	12
HTB-43	Fadu	ATCC_web	0.957	12	8,9	11,12	11	15,17,18	8	-	11	12
JCRB1492	NCI-H2228-Luc	10042012	0.695	12	11	11	11,13	15,17	7,8	X	11	12
NCI60059	RXP-393	04162009	0.667	12,13	8,12	11,12	11	16,17	7,8	X	8,11	10,12
JCRB0092	P39/TSU	031395	0.519	11,12	8,11	11,12	11	15,16	7,8	X	8,11	13,14
IF050022	HL-60	1055	0.583	12	8,11	11,12	11	16	8	X	8,11	13,14
IF050492	AM-38	961	0.583	12,13	8	12	11,13	17	7	X,Y	11	11,12
JCRB0006	HL60RG	052092	0.560	12	8,11	11,12	11	16	8	X	8,11	13,14
JCRB0115	SCC-3	052191	0.583	9	8	11,12	11,12	16,17	9	X	9,11	12
IF050072	MRC-9	181	0.560	12,13	8,11	10,11	12	16,17	6,8	X	11	12
KBN0116-03	cell-047	4302013	1.000	12	8,9	11,12	11	15,17	8	-	11	12