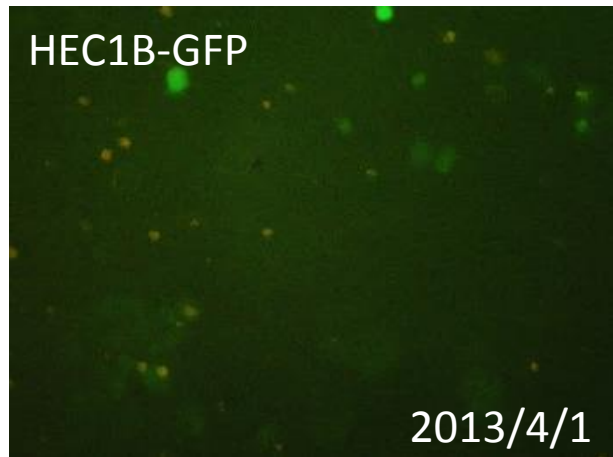
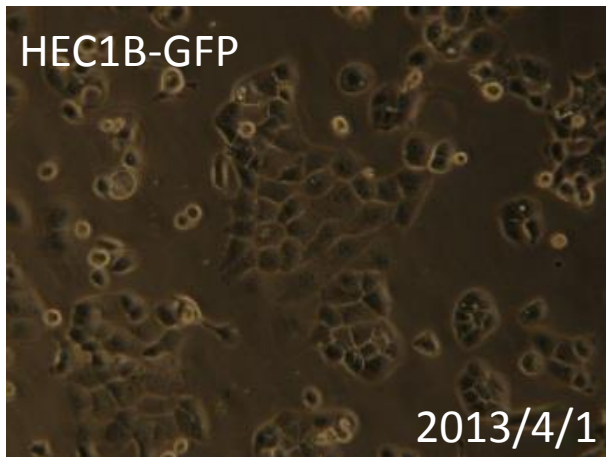


## 091-086 HEC1B-GFP

### 要旨

HEC1B-GFP細胞は、ヒト子宮頸がん由来HEC1B細胞に対して、緑色蛍光タンパク質 (EGFP) 遺伝子を含むレトロウイルスベクターpFBによる遺伝子組換えを行って作製した細胞である。顕微鏡観察から、蛍光を発する細胞の割合は、61%であった。Short tandem repeats (STR)-PCR法による解析では、ATCCのHEC-1-Bと同一と認証された。

### Microscopic images



### STR-profile

KBN0112

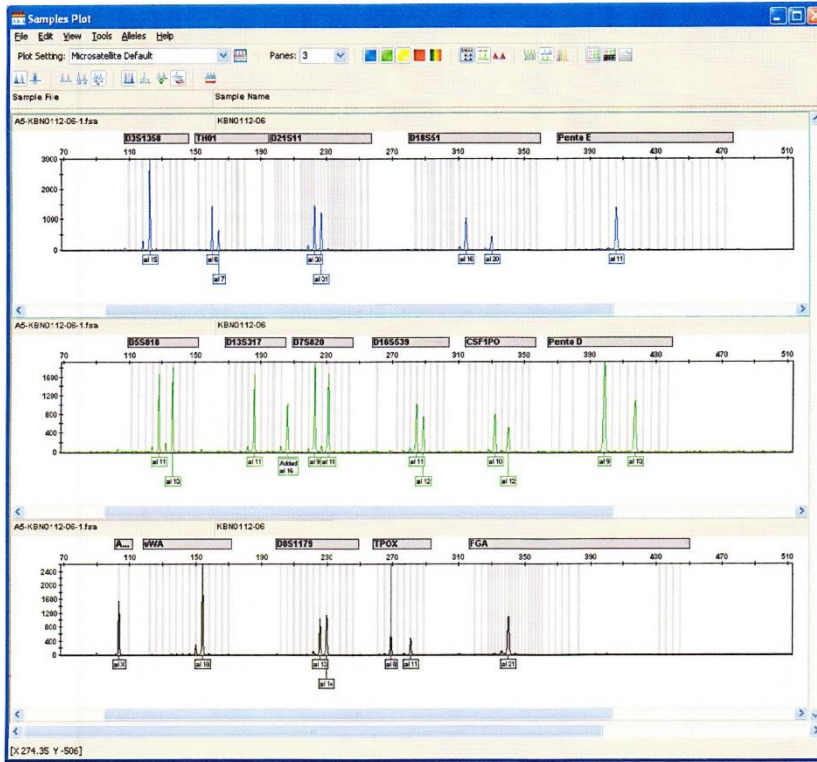
#### Summary (Cell No. : KBN0112\_06)

It was confirmed that the cell (Cell No. : KBN0112\_06, Cell Name: cell-030) was the same as the cell registered in ATCC (HTB-113 HEC-1-B), and the cell registered in JCRB (JCRB1193 HEC-1-B, JCRB0042 HEC-1), by the comparison with the database of JCRB Cell Bank.

STR-profile

KBN0112

Peak report (Cell No. : KBN0112\_06)



STR Profile (Cell No. : KBN0112\_06)

<b>D3S1358</b>	<b>TH01</b>	<b>D21S11</b>	<b>D18S51</b>	<b>Penta E</b>	<b>D5S818</b>	<b>D13S317</b>	<b>D7S820</b>
15	6,7	30,31	16,20	11	11,13	11,16	9,11
<b>D16S539</b>	<b>CSF1PO</b>	<b>Penta D</b>	<b>AM</b>	<b>VWA</b>	<b>D8S1179</b>	<b>TPOX</b>	<b>FGA</b>
11,12	10,12	9,13	X	18	13,14	8,11	21

Comparison with database (Cell No. : KBN0112\_06)

Cell No.	Cell Name	Lot No.	EV	D5S818	D13S317	D7S820	D16S539	VWA	TH01	AM	TPOX	CSF1PO
KBN0112-06	cell-030	04012013	1.000	11,13	11,16	9,11	11,12	18	6,7	X	8,11	10,12
HTB-113	HEC-1-B	-----	1.000	11,13	11,16	9,11	11,12	18	6,7	X	8,11	10,12
JCRB1193	HEC-1-B	07122007	0.968	11,13	11	9,11	11,12	18	6,7	X	8,11	10,12
JCRB0042	HEC-1	110586	0.897	11,13	11	11	11,12	18	6,7	X	11	10,12
JCRB1220	UC702	11282007	0.741	11	11	11	11,12	14,17	6,7	X	8	12
JCRB1300	PL514	02252008	0.733	11,13	11,12	9,11	11,12	16	6,9	X	8,11	9
IFC050436	KS-1	940	0.710	8,12	11,13	11	11,12	14,18	6,9	X	8,11	10,12
IFC050513	MTA	924	0.710	10,11	11	10,11	11,12	18,19	6,7	X	8,11	10,11
JCRB0326	XP39OS	04222011	0.710	11,12	9,11	11,12	10,12	17,18	6,7	X	8,11	12
JCRB1057	XP39OSTERT	deposit	0.710	11,12	9,11	11,12	10,12	17,18	6,7	X	8,11	12
JCRB1153	HCA-1	04252006	0.692	11	12	10,11	11	18	7	X	8,11	12
KBN0112-06	cell-030	04012013	1.000	11,13	11,16	9,11	11,12	18	6,7	X	8,11	10,12