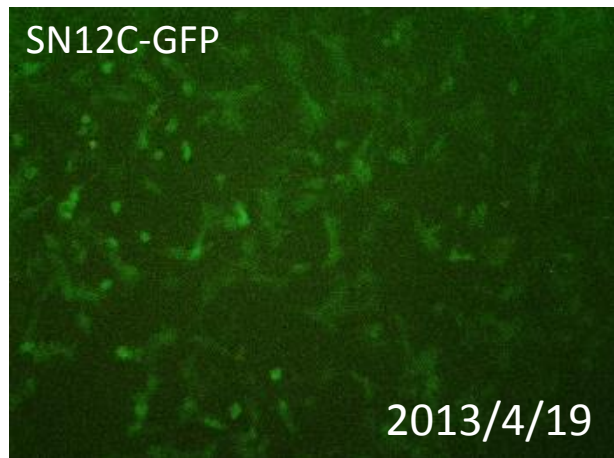
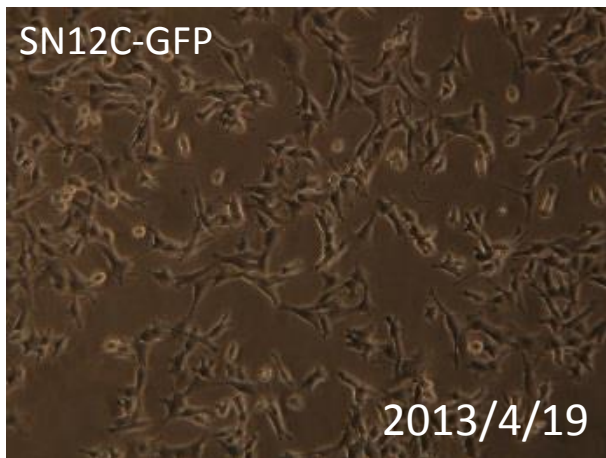


091-161 SN12C-GFP

要旨

SN12C-GFP細胞は、ヒト腎臓がん由来SN12C細胞に対して、緑色蛍光タンパク質(EGFP)遺伝子を含むレトロウイルスベクターpFBによる遺伝子組換えを行って作製した細胞である。顕微鏡観察から、蛍光を発する細胞の割合は、100%であった。Short tandem repeats (STR)-PCR法による解析では、NCIのSN12Cと同一と認証された。

Microscopic images



STR-profile

KBN0114

Summary (Cell No. : KBN0114_02)

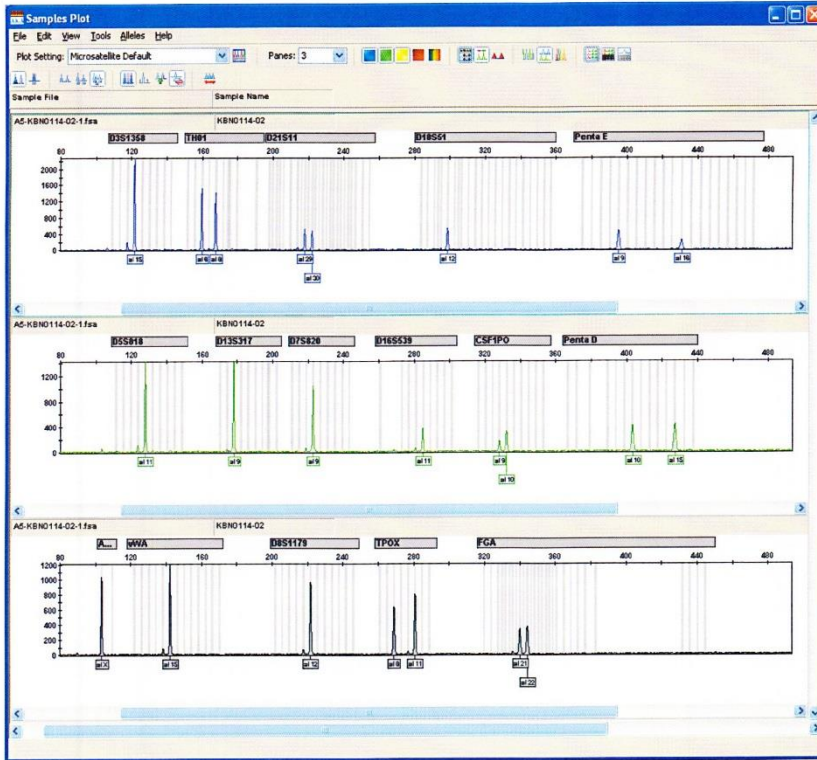
It was confirmed that the cell (Cell No. : KBN0114_02, Cell Name: cell-036) was the same as the cell registered in NCI (SN12C), by the comparison with the database of JCRB Cell Bank.

Furthermore, it was confirmed that this cell was the same as that also of KBN0114_03 (Cell Name: cell-037).

STR-profile

KBN0114

Peak report (Cell No. : KBN0114_02)



STR Profile (Cell No. : KBN0114_02)

D3S1358	TH01	D21S11	D18S51	Penta_E	D5S818	D13S317	D7S820
15	6,8	29,30	12	9,16	11	9	9
D16S539	CSF1PO	Penta D	AM	VWA	D8S1179	TPOX	FGA
11	9,10	10,15	X	15	12	8,11	21,22

Comparison with database (Cell No. : KBN0114_02)

Cell No.	Cell Name	Lot No.	EV	D5S818	D13S317	D7S820	D16S539	VWA	TH01	AM	TPOX	CSF1PO
KBN0114-02	cell-036	04122013	1.000	11	9	9	11	15	6,8	X	8,11	9,10
KBN0114-03	cell-037	04122013	1.000	11	9	9	11	15	6,8	X	8,11	9,10
NOI	SN12C	04162009	1.000	11	9	9	11	15	6,8	X	8,11	9,10
JCRB1162	Yub635	07112006	0.643	10,11	9,11	8,9	9,11	16,19	6	X	8,11	9,12
JCRB0177.0	KP-1N	08122002	0.615	11,13	11	8,10	11	15	7,8	X	8,11	10,12
RCB1002	MKN74	00000001	0.615	11	11	9	9,11	15,16,19,20	6	X	8,11	12
JCRB0526	TIG-101	09022011	0.593	9,11	9,10	11,12	11	14	6,7	X	8,11	9,12
JCRB1193	HEC-1-B	07172007	0.593	11,13	11	9,11	11,12	18	6,7	X	8,11	10,12
JCRB1300	PL514	02222008	0.593	11,13	11,12	9,11	11,12	16	6,9	X	8,11	9
JCRB1364	PL520	03052010	0.593	11,13	9,11	10,13	11	14,18	6,8	X	11	10,12
JCRB1400	Caki-1-Luc	03012011	0.593	11	11,12	8,12	12	15,17	6,8	X	8,11	10,11
KBN0114-03	cell-037	04122013	1.000	11	9	9	11	15	6,8	X	8,11	9,10