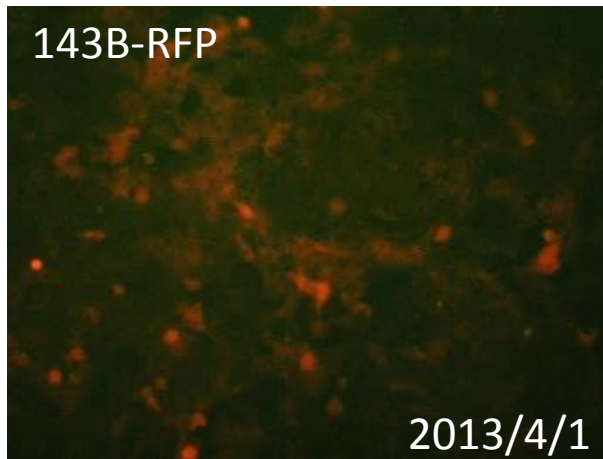
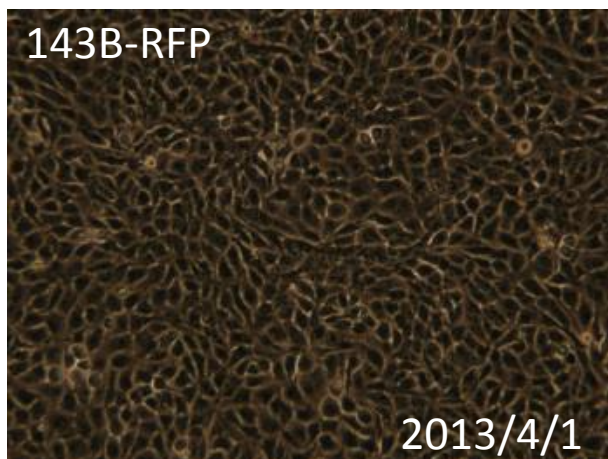


091-177 143B-RFP

## 要旨

143B-RFP細胞は、ヒト骨肉腫由来143B細胞に対して、赤色蛍光タンパク質(DsRed2)遺伝子を含むレトロウイルスベクターpLNCX2による遺伝子組換えを行って作製した細胞である。顕微鏡観察から、蛍光を発する細胞の割合は、97%であった。Short tandem repeats (STR)-PCR法による解析では、ATCC等の143Bと同一と認証された。

## Microscopic images



## STR-profile

KBN0112

### Summary (Cell No. : KBN0112\_05)

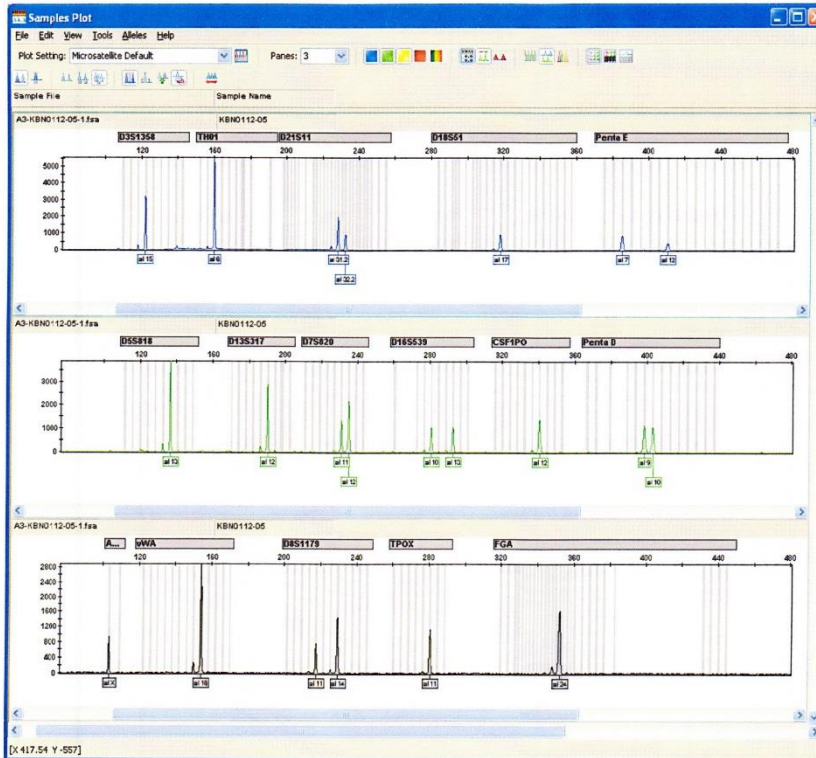
It was confirmed that the cell (Cell No. : KBN0112\_05, Cell Name: cell-029) was the same as the cell registered in ATCC (CCL-1545 KHOS-240S, CRL-8303 143B, CRL-8304 143B PML BK TK, CRL-1543 HOS, CRL-1544 KHOS/NP (R-970-5), CRL-1546 KHOS-321H), the cell registered in RCB (RCB0701 143B/TK<sup>(-)</sup>neo<sup>(R)</sup>, RCB0992 HOS), and the cell registered in JCRB (IFO50106 HOS), by the comparison with the database of JCRB Cell Bank.

Furthermore, it was confirmed that this cell was the same as that also of KBN0110\_09 (Cell Name: cell-013).

STR-profile

KBN0112

Peak report (Cell No. : KBN0112\_05)



STR Profile (Cell No. : KBN0112\_05)

D3S1358	TH01	D21S11	D18S51	Penta E	D5S818	D13S317	D7S820
15	6	31,2,32,2	17	7,12	13	12	11,12
D16S539	CSF1PO	Penta D	AM	VWA	D8S1179	TPOX	FGA
10,13	12	9,10	X	18	11,14	11	24

Comparison with database (Cell No. : KBN0112\_05)

Cell No.	Cell Name	Lot No.	EV	D5S818	D13S317	D7S820	D16S539	VWA	TH01	AM	TPOX	CSF1PO
KBN0112-05	cell-029	04012013	1.000	13	12	11,12	10,13	18	6	X	11	12
GRL-1545	KHOS-240S	-----	1.000	13	12	11,12	10,13	18	6	X	11	12
GRL-8303	143B	-----	1.000	13	12	11,12	10,13	18	6	X	11	12
GRL-8304	143B PML BK TK	-----	1.000	13	12	11,12	10,13	18	6	X	11	12
RCB0701	143B/TK(-)neo(R)	-----	1.000	13	12	11,12	10,13	18	6	X	11	12
GRL-1543	HOS	-----	0.957	13	12	11,12	10,13	18	6	X	8,11	12
RCB0992	HOS	-----	0.957	13	12	11,12	10,13	18	6	X	8,11	12
IFO50106	HOS	239	0.957	13	12	11,12	10,13	18	6	X	8,11	12
KBN0110-09	cell-013	03212013	0.957	13	12	11,12	10,13	18	6	X	8,11	12
GRL-1544	KHOS/NP (R-970-5)	-----	0.957	13	12	11,12	10,13	18	6	X	8,11	12
GRL-1546	KHOS-321H	-----	0.957	13	12	11,12	10,13	18	6	X	8,11	12
KBN0112-05	cell-029	04012013	1.000	13	12	11,12	10,13	18	6	X	11	12